

ROSLYN
ESTATES

YOU ARE CORDIALLY INVITED
TO VISIT ROSLYN ESTATES
AND TO ENJOY ITS PRIVILEGES
AS THE GUEST OF THIS COM-
MUNITY OF BETTER HOMES.

Copyright, 1926
UNION MORTGAGE COMPANY
New York
Privately Printed



CLASSIC DIGNITY FINDS A MOST FITTING BACK-
GROUND IN THE RARE NATURAL LOVELINESS OF
UNSPOILED WOODLAND



BY WAY OF
INTRODUCTION



ROLLING HILLS that form the North Shore of Long Island have long been celebrated for their scenic splendor. Ideally situated in the heart of these famous hills is Roslyn Estates.

Some of the finest private properties in America are adjacent to the Roslyn Estates section, notably—the Ryan estate, the Whitney estate, the Mackay estate, the Brady estate, the Munsey estate, the Pulitzer estate. Fully a score of golf and country clubs are within easy reach, and many yacht clubs and bathing beaches are nearby along the North Shore.

Schools of unusual quality, churches and good stores, are close at hand, while all city conveniences are provided—water, gas and electricity.

The photographs on the following pages present some idea of the attractive variety of architectural treatment to be found at Roslyn Estates. But only a personal visit can reveal its unusual charm and quiet seclusion.



A DELIGHTFUL OLD-WORLD TOUCH—A VERY IN-
DIVIDUAL COURTYARD WITH BROAD LAWNS AND
ENCIRCLING TREES



WOODLAND EFFECTS OF LIGHT AND SHADOW ADD
TO THE APPEAL OF THIS SUBSTANTIAL HOME IN
THE ENGLISH MANNER



EVERY LINE IN THIS SPACIOUS
HOUSE, TYPICALLY AMERICAN
IN DESIGN, BREATHES A
FRIENDLY INVITATION

A VERY DISTINCTIVE DOOR-
WAY GIVES MARKED APPEAL
—AN ENTRANCE OF UNUSUAL
CHARACTER

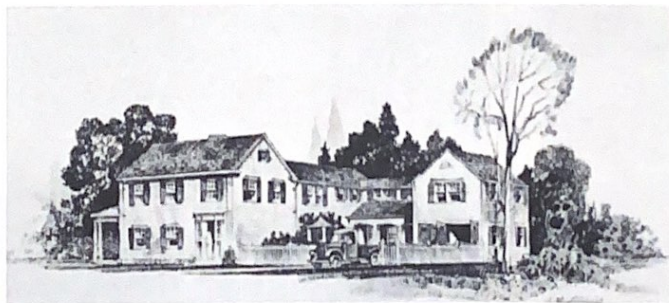






A SPLENDID SWEEP OF VELVET TURF
RELIEVES THE SEVERE LINES AND SOLID
MASSES OF THIS FACADE

THE ATMOSPHERE OF THE
COLONIAL NEW ENGLAND
FARMHOUSE IS HERE FELT
IN EVERY DETAIL

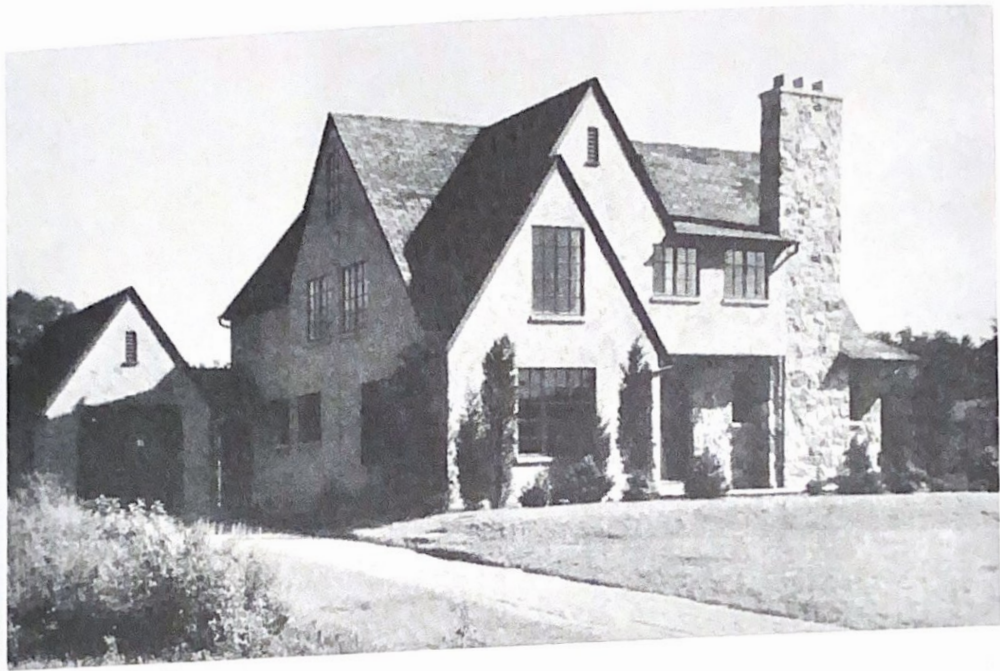




A SPLENDID SWEEP OF VELVET TURF
RELIEVES THE SEVERE LINES AND SOLID
MASSES OF THIS FACADE

THE ATMOSPHERE OF THE
COLONIAL NEW ENGLAND
FARMHOUSE IS HERE FELT
IN EVERY DETAIL





A QUIET IMPRESSIVE DIGNITY, AND AN
ENTRANCE EXTREMELY PICTURESQUE,
CREATE INDIVIDUALITY



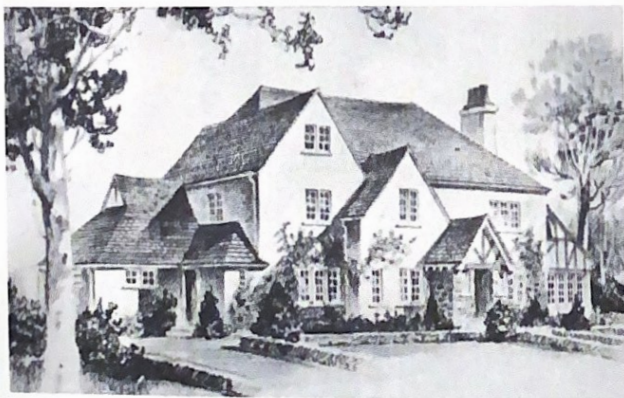


CONTRAST OF COLOR AND DEPTH OF
SHADOW ADAPT THE SPANISH NOTE
TO THE WOODED HILLSIDE

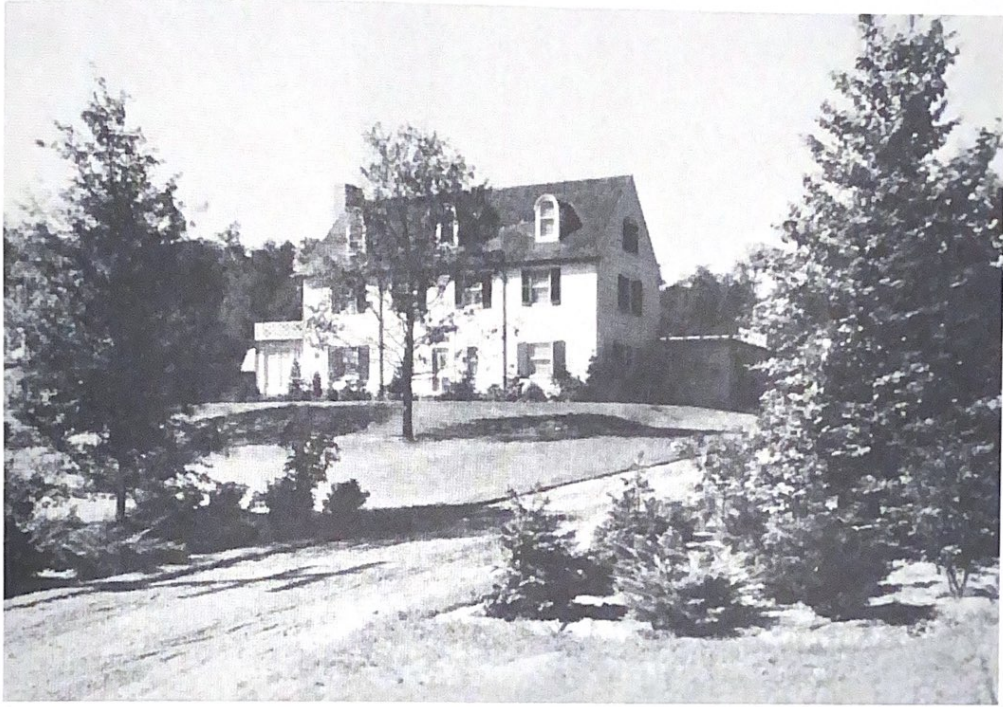




A CHARMING POND, WHERE STILL
WATER REFLECTS THE GRACE OF
SECLUDED WOODLAND



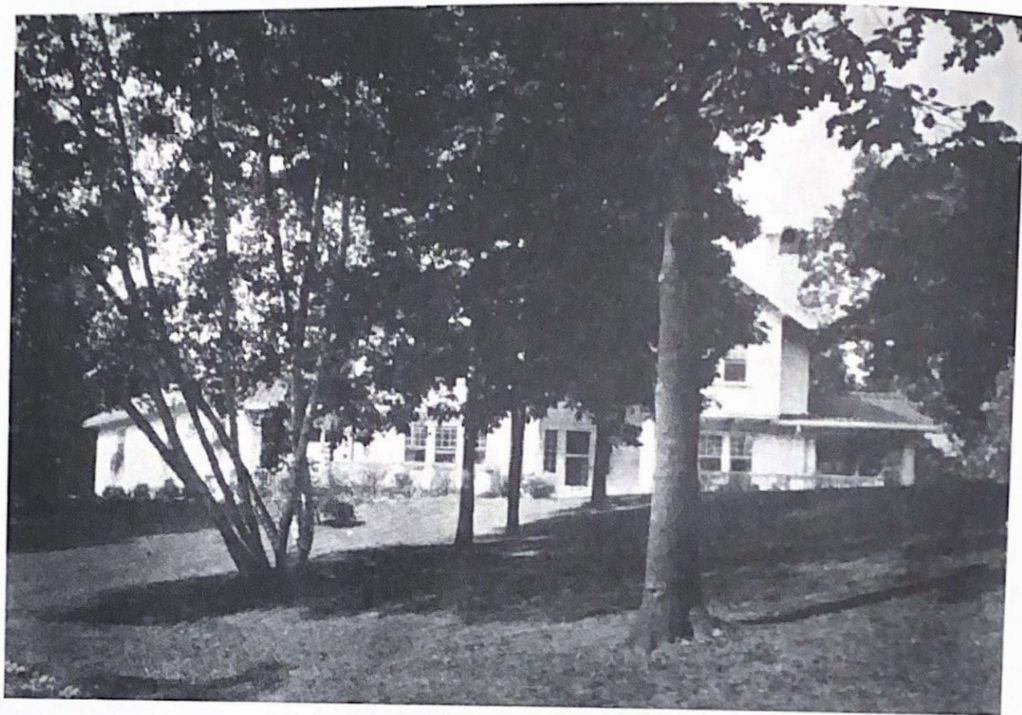
THE QUAIN GABLES OF
THE ENGLISH COTTAGE
ARE EQUALLY EFFECTIVE
IN MORE MASSIVE CON-
STRUCTION



THE DIGNITY OF THE AMERICAN CO-
LONIAL, STANDING IN SILHOUETTE
AGAINST SKY AND TREES



THERE IS INDESCRIBABLE ALLUREMENT IN THE SHIFTING
PLAY OF LIGHT UPON THIS QUIET LAKE WITH ITS BORDER
OF STATELY FOREST TREES

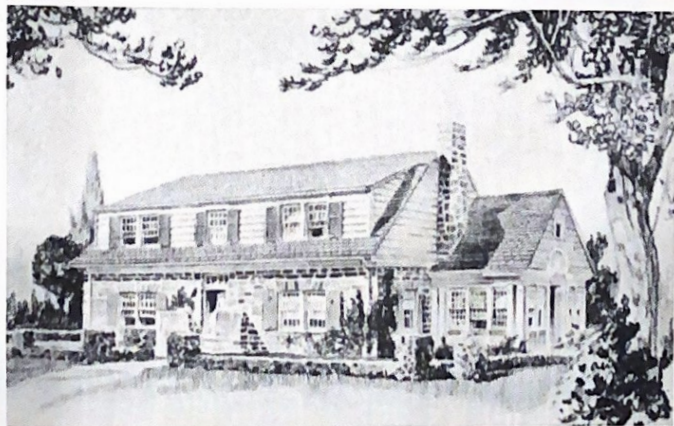


INVITING GLIMPSES OF WHITE STUCCO
THROUGH PICTURESQUE GROVES OF
BIRCH AND OAK



A GRAVEL DRIVEWAY CLIMBS THE
SLOPE TO THE STURDY STRENGTH OF
THE DUTCH COLONIAL

THE HERITAGE OF LONG
ISLAND FROM THE EARLY
DUTCH PIONEERS—RE-
PRODUCED IN STONE
AND FRAME







CROWNING A TERRACE OF CLOSE-CLIPPED TURF,
AMID SPRUCE, DOGWOOD AND MAPLE

THE CHARMS OF TRELIS AND DOORWAY
SETTLE ADD A DELIGHTFUL
INTIMACY



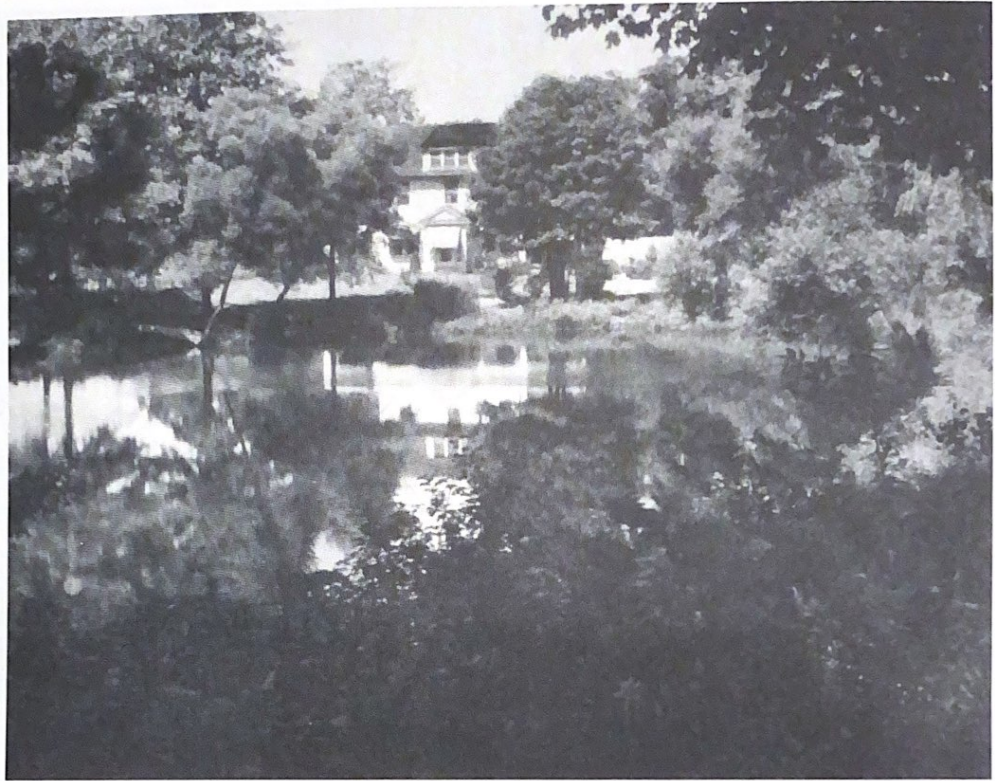
A SETTING OF ANCIENT BOXWOOD AND
FAN-LIKE BIRCH FRAMES THE SIMPLICITY
OF THIS CLASSIC FACADE



SYMMETRY AND BALANCE, SUPERBLY
DESIGNED AGAINST A BACKGROUND
OF WOODED HILLSIDE

AN ENGLISH HALF-TIMBERED
EFFECT DOWN A VISTA OF POOL
AND TERRACE

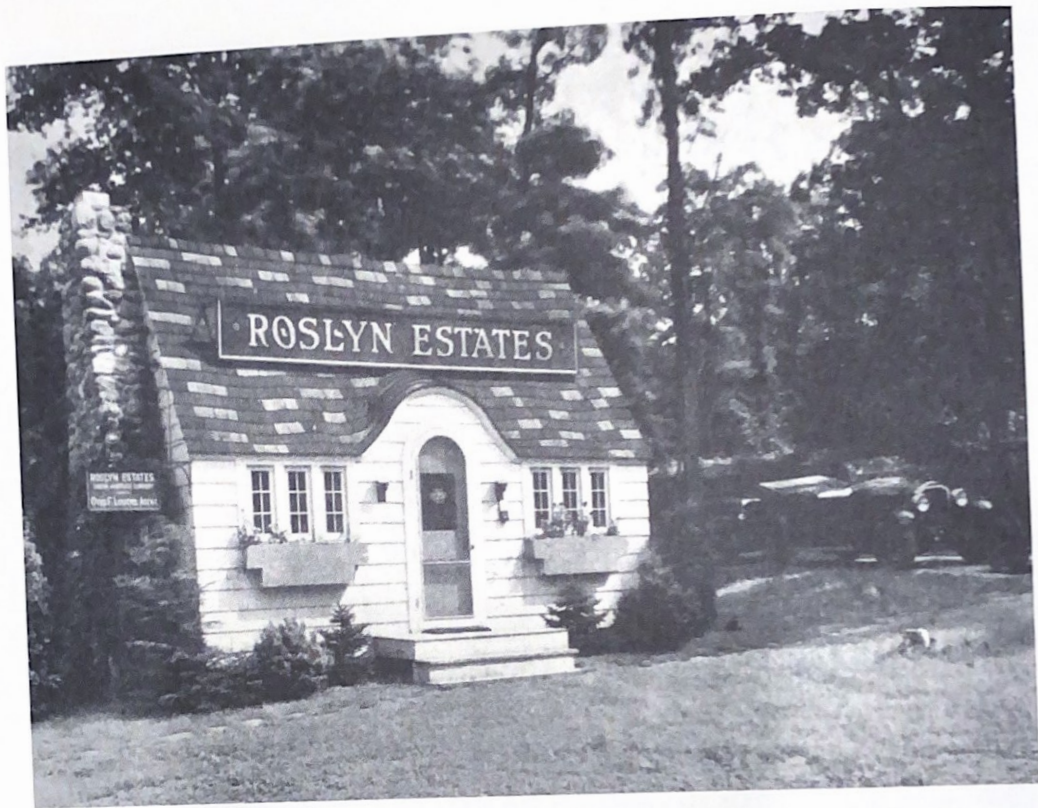




A RESTFUL ENVIRONMENT MIRRORED
IN THE CRYSTAL WATERS OF THIS
ENCHANTING POOL



A QUAIN TATE LODGE AND TEA HOUSE,
SNUGGLING COSILY AMID SHRUBBERY
AND LOFTY TREES



A COTTAGE OFFICE ON THE PROPERTY

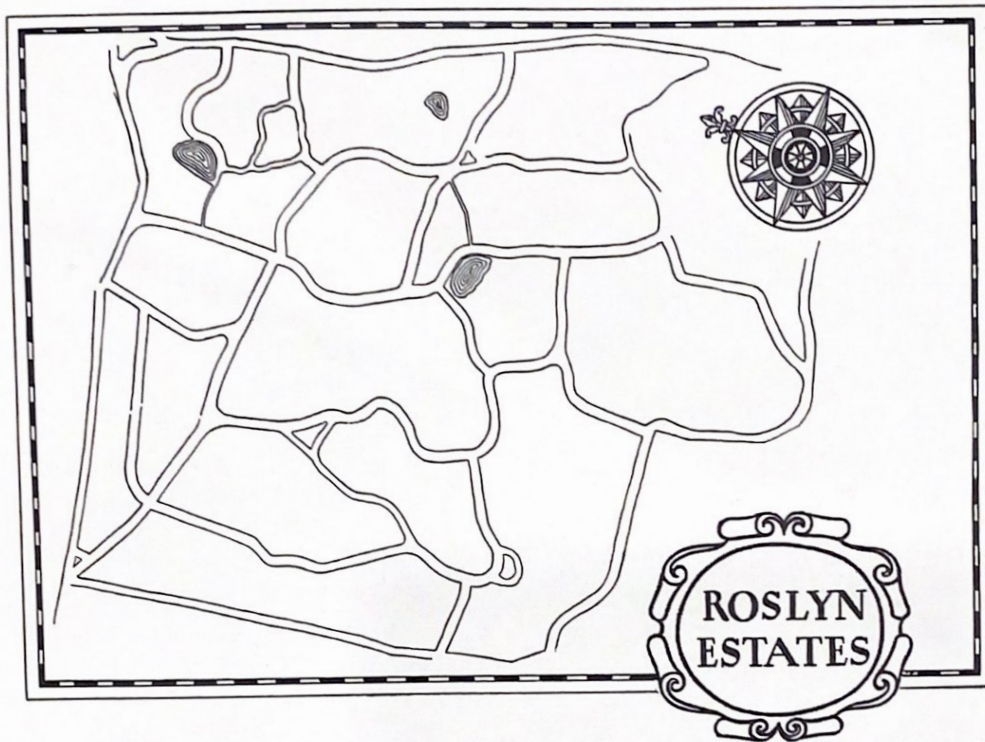
THE NEW HOMES erected at Roslyn Estates are of the most distinctive types, in varied designs. For those who prefer to build from their own plans, an efficient corps of engineers, architects and builders will offer every assistance.

The company is prepared to build houses to meet the requirements of approved purchasers, or to furnish building or permanent loans to those who prefer to build for themselves.

UNION MORTGAGE COMPANY
60 Broadway, New York City

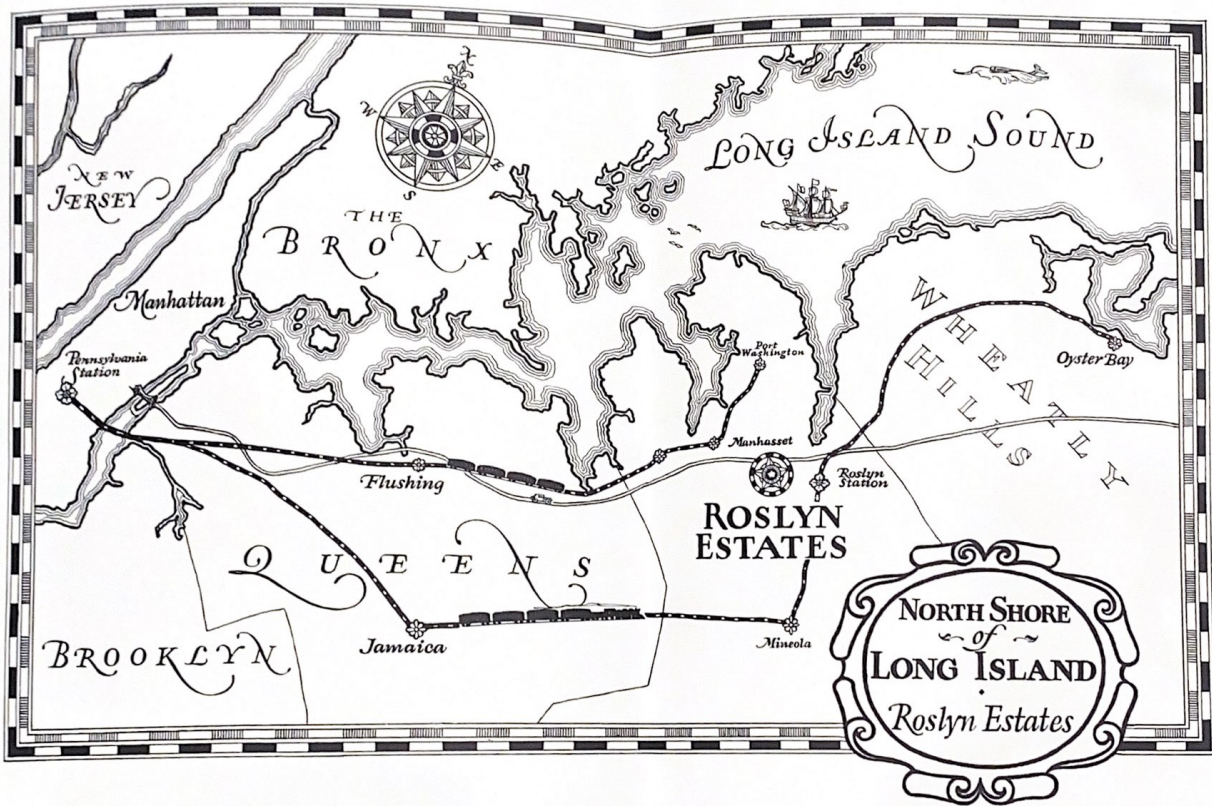


Otis F. Loucks, Agent
North Hempstead Turnpike, Roslyn Estates, L. I.



Roslyn Estates is adjacent to Manhasset, which is about thirty minutes from Pennsylvania Station on the Port Washington electric branch of the Long Island Railroad. It is likewise near to Roslyn, where the Oyster Bay branch of the same railroad gives forty-five minute service either to Pennsylvania Station or to Flatbush, Brooklyn.

Motor buses run from Roslyn Estates to Port Washington, Flushing, Mineola, Westbury and intermediate stations. Hundreds of miles of excellent roads lead to the Estates from all parts of Long Island—the distance by motor to Queensboro Bridge is about eighteen miles.



NEW JERSEY

LONG ISLAND SOUND

THE BRONX

Manhattan

Pennsylvania Station

Flushing

Port Washington

ROSLYN ESTATES

WHEATLEY HILLS

Oyster Bay

QUEENS

BROOKLYN

Jamaica

Mineola

NORTH SHORE
of
LONG ISLAND
Roslyn Estates

Created by
DORRANCE, SULLIVAN & CO., INC.
Advertising
New York

Reprinted on the
50th Anniversary of
The Incorporation of
The Village of
Roslyn Estates
Compliments of Peter F. Mallon, Inc.