

Roslyn Landmark Society Series ❖❖ Roslyn: Then and Now

FOR MORE INFORMATION ON THE HISTORY OF THESE BUILDINGS, AND OTHERS, PLEASE VISIT [HTTPS://WWW.ROSLYNLANDMARKS.ORG/](https://www.roslynlandmarks.org/)

Pine-Onderdonk-Bogart House ❖❖ 1305 Old Northern Boulevard, Roslyn

ORIGINAL USE:

Residence

DATE BUILT:

1740

FUN FACT:

Visited by President George Washington on April 24, 1790 where he "was kindly received and entertained" by the owner of the Roslyn Grist Mill and Paper Mill.

Then: 1910



Photo courtesy of the Roslyn Landmark Society

Now: 2021



Photo by Howard Krolick

ORIGINAL USE:

Residence

DATE BUILT:

1740

FUN FACT:

In 1966, the store was expanded to include the current footprint and became Swan's of Roslyn, possibly because of new ownership. The logo on the exterior of the building was simply changed from Shaw's to Swan's by moving the "w" and cutting the "h" to make it an "n".

Then: 1966



Photo by Ray Jacobs

Now: 2021



Photo by Howard Krolick

William M. Valentine Emporium ❖❖ 17-21 Main Street, Roslyn

ORIGINAL USE:

Store

DATE BUILT:

1840

FUN FACT:

Considered the oldest commercial block in continuous use in Nassau County.

Then: 1970



Photo by Ray Jacobs

Now: 2021



Photo by Howard Krolick

Lincoln Building ❖❖ 2 Main Street, Roslyn

ORIGINAL USE:

Automobile dealership/garage

DATE BUILT:

1926

FUN FACT:

Supplied coach-built Lincolns to Long Island from 1926 to 1930.

Then: 1926



Photo courtesy of Walt Gosden

Now: 2021



Photo by Howard Krolick

Frederick C. Hicks Store/Roslyn Boat & Tackle/U.S. Blues ❖❖ 1353 Old Northern Boulevard, Roslyn

ORIGINAL USE:

Store

DATE BUILT:

1895-1905

FUN FACT:

On October 1, 1981, Madonna gave one of her earliest performances in this building.

Then: 1965

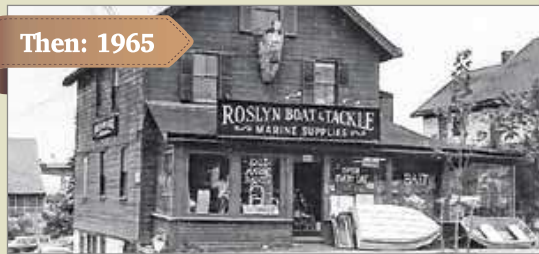


Photo courtesy of Gail Gimbel

Now: 2021



Photo by Howard Krolick

Roslyn Landmark Society Series ❖❖ Roslyn: Then and Now

FOR MORE INFORMATION ON THE HISTORY OF THESE BUILDINGS, AND OTHERS, PLEASE VISIT [HTTPS://WWW.ROSLYNLANDMARKS.ORG/](https://www.roslynlandmarks.org/)

Roslyn Presbyterian Church (Original) ❖❖ 33 East Broadway, Roslyn

Then: 1920



Photo courtesy of the Roslyn Landmark Society

Now: 2021



Photo by Howard Krolick

ORIGINAL USE:
Church

DATE BUILT:
1851

FUN FACT:

By around 1920 the increasing Roslyn Presbyterian congregation began to outgrow the small building on East Broadway which had to serve as church and Sunday School. The church moved in 1928 to its current location at 140 East Broadway.

Mansion House/Roslyn National Bank and Trust ❖❖ 1432 Old Northern Blvd., Roslyn

Then: 1910



Photo by William Pickering

Now: 2021



Photo by Howard Krolick

ORIGINAL USE:
Hotel

DATE BUILT:
1860

FUN FACT:

Prior to the 1905 Vanderbilt Cup Race, driver Al Campbell and his "X" Mercedes team posed in front of the Mansion House, their headquarters. The Mansion House was just four miles from the Start/Finish Line in Mineola.

Hewlett and Remsen Garage ❖❖ 1446 Old Northern Boulevard, Roslyn

Then: 1905

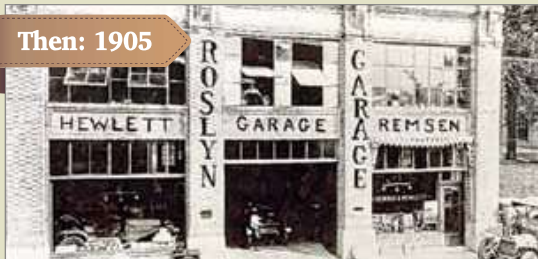


Photo courtesy of Ian Zwerdling

Now: 2021



Photo by Howard Krolick

ORIGINAL USE:
Auto dealership and garage

DATE BUILT:
1910

FUN FACT:

John Remsen also owned a large livery business in Roslyn consisting of 28 horses and more than 40 carriages and farm machines.

Bulls Head Hotel and Auto & Wagon Shed ❖❖ 30 Glen Cove Road, Greenvale

Then: 1905



Photo courtesy of Howard Krolick

Now: 2021



Photo by Howard Krolick

ORIGINAL USE:
Hotel

DATE BUILT:
1876

FUN FACT:

A favorite location for viewing the 1905 and 1906 Vanderbilt Cup Races.

Dr. William Dohm's Sick Animal Hospital ❖❖ 55 Bryant Avenue, Roslyn

Then: 1968



Photo by Ray Jacobs

Now: 2021



Photo by Howard Krolick

ORIGINAL USE:
Animal Hospital

DATE BUILT:
1925

FUN FACT:

The original façade was saved in 1983.